

Representative Jack McFarland
Chairman



Representative Jason Hughes
Vice Chairman

Fiscal Year 2026 Executive Budget Review

DEPARTMENT OF STATE

House Committee on Appropriations
House Fiscal Division

March 26, 2025

Budget Analyst: Blair LeBlanc

TABLE OF CONTENTS

This presentation was produced by the House Fiscal Division of the Louisiana House of Representatives.

900 N. 3rd Street
Baton Rouge, LA 70802
house.louisiana.gov/housefiscal/

All data and figures were obtained from the governor's Fiscal Year 2025-2026 Executive Budget and Supporting Documents provided by the Office of Planning and Budget within the Division of Administration along with House Bill 1 of the 2025 Regular Session, unless otherwise noted.

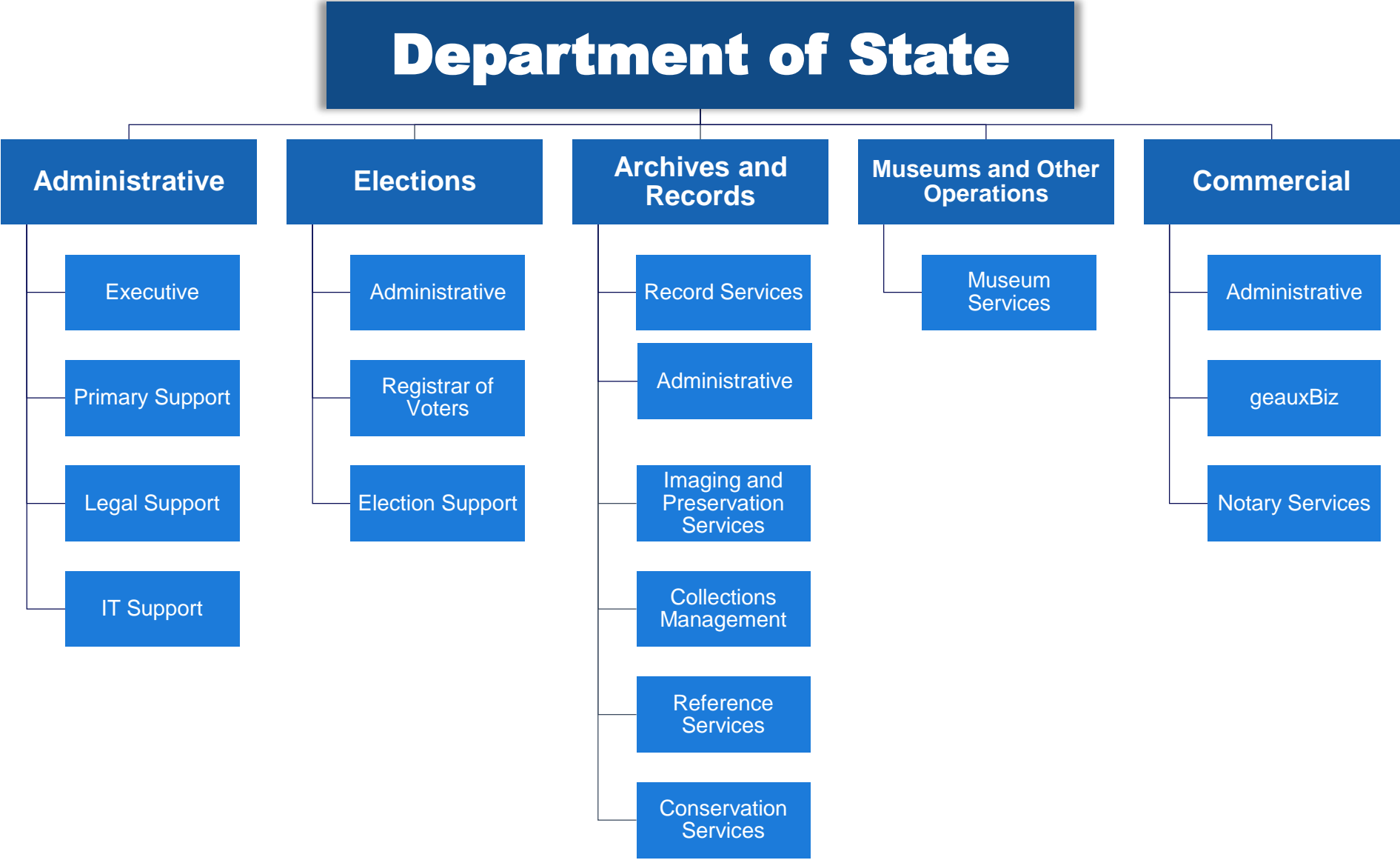
<https://www.doa.la.gov/doa/opb/budget-documents/>

TOPIC

PAGE

Department Organization	3
FY 26 Budget Recommendation	4
Historical Spending	5
Sources of Funding	6
Funding Comparison	7
FY 26 Expenditure Recommendation	8
Expenditure Comparison	10
Personnel Information	12
Department Contacts	13
General Department Information	14
General Budgetary Information	18

DEPARTMENT ORGANIZATION

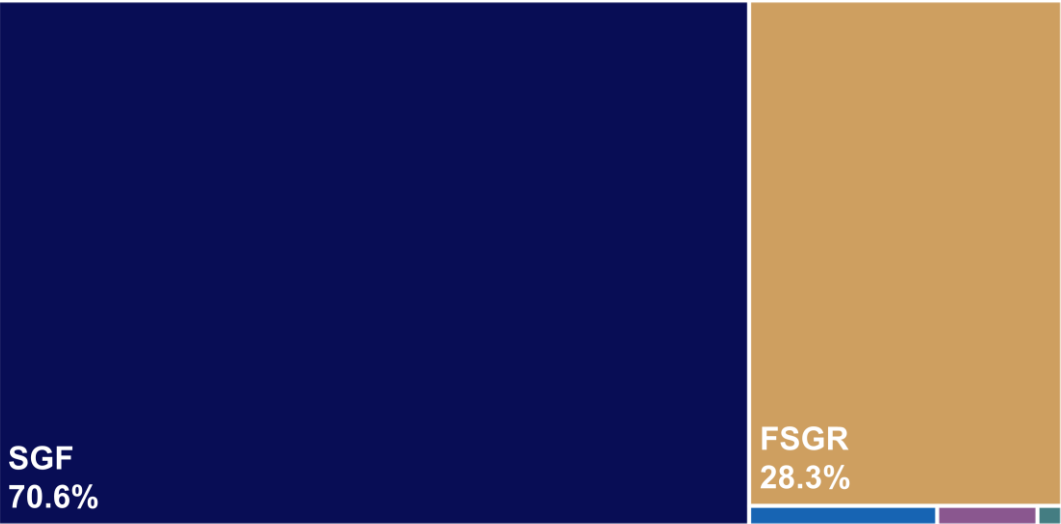


Note: Further detail on department programs, functions, and services are under the General Department Information Section.

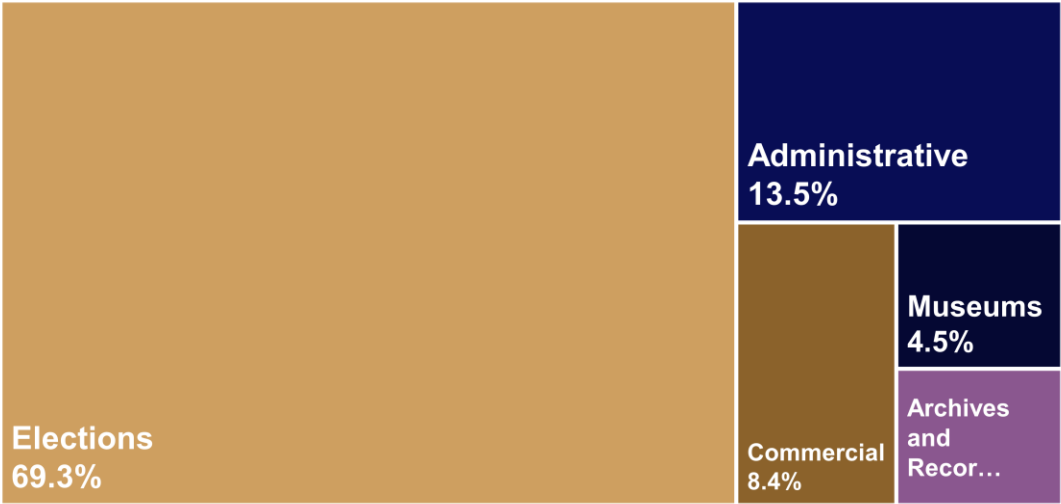
FY 26 BUDGET RECOMMENDATION

Total Funding = \$131,034,282

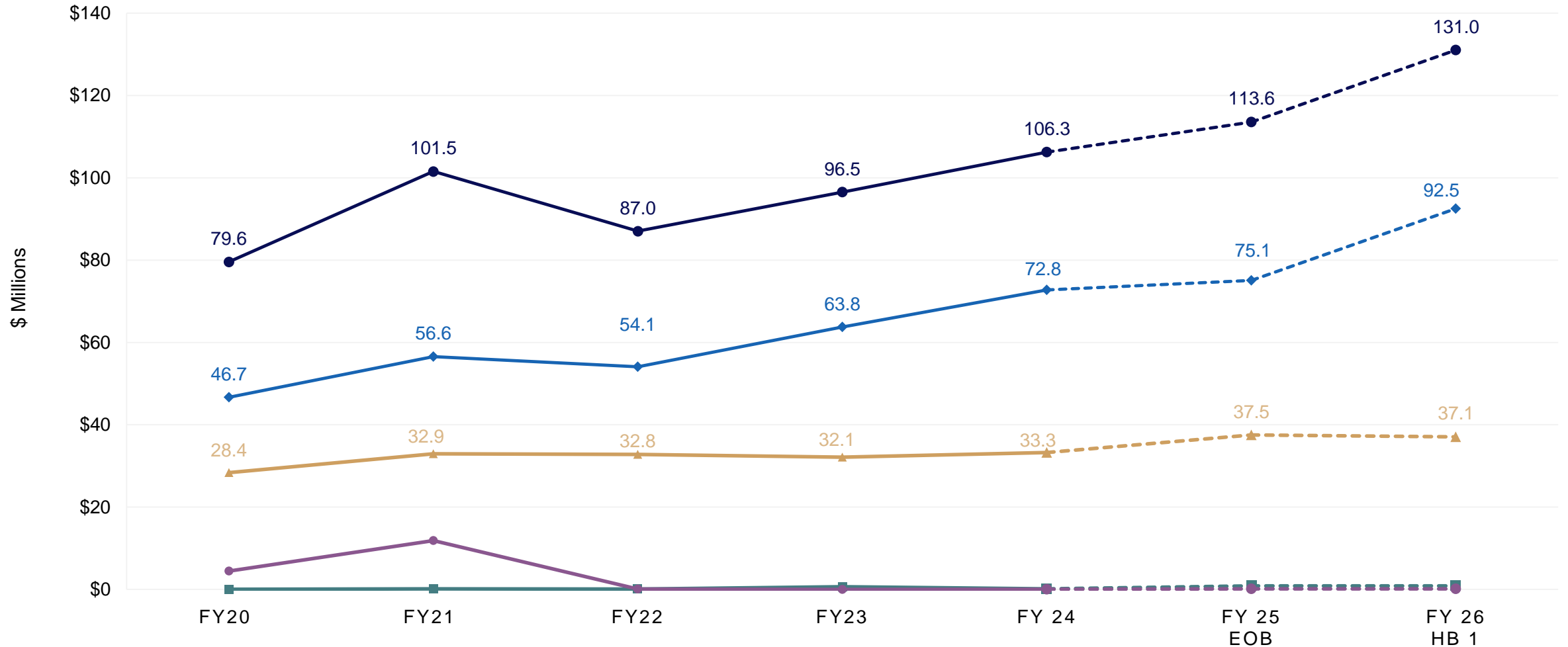
Means of Finance		
State General Fund	\$	92,514,631
Interagency Transfers		857,600
Fees & Self-generated		37,091,484
Statutory Dedications		113,078
Federal Funds		457,489
Total	\$	131,034,282



Program Funding & Authorized Positions			
		Amount	Positions
Administrative	\$	17,685,514	85
Elections		90,829,019	151
Archives and Records		5,528,645	38
Museum and Other Operations		5,926,090	37
Commercial		11,065,014	55
Total	\$	131,034,282	366



HISTORICAL SPENDING



SOURCES OF FUNDING

State General Fund \$92.5 M	Interagency Transfers \$857,600	Self-generated Revenue \$37.1 M	Statutory Dedications \$113,078	Federal Funds \$457,489
<p>The chief operating fund of the State recognized by the Revenue Estimating Conference from various taxes, licenses, fees, and other revenue sources except for those identified as other means of financing</p>	<p>Funding is derived from the following transfers:</p> <p>\$530,000 from federal grants received via the Governor's Office of Homeland Security (GOHSEP)</p> <p>\$182,600 from payments from other state and local agencies for microfilm services, sale of storage boxes, and intake/disposal fees</p> <p>\$145,000 from Act 4 of 2024 RLS (20-901) which provides an allocation of \$100k to the LA State Exhibit Museum and \$25k to the LA State Oil & Gas Museum. Act 776 2024 RLS, (20-945) appropriates \$20k for repairs to the State Cotton Museum</p>	<p>Revenues derived from the following transfers:</p> <p>\$33.8 M from business filings-annual reports, domestic corporations, foreign corporations, registrations for trademarks or partnerships, providing certificates of good standing, providing copies and certified copies of any requested documents</p> <p>\$3.2 M from candidate qualifying fees, reimbursement of election expenses from local governments, fees for voting list requests</p> <p>\$84,962 from rentals for events and weddings from the Old State Capitol and other museums</p>	<p>Funding is derived from the following fund:</p> <p>\$113,078 From the Shreveport Riverfront and Convention Center Fund for use at the Louisiana State Exhibit Museum in Shreveport</p>	<p>Federal funding is derived from the following grant:</p> <p>Electronic Absentee System for Elections (EASE) grant provided by the U.S. Department of Defense as a part of the Federal Voting Assistance Program (FVAP)</p>

FUNDING COMPARISON

Means of Finance	FY 24 Actual Expenditures	FY 25 Existing Operating Budget 12/1/24	FY 26 HB1 Budget	Change Existing Operating Budget to HB1		Change Actual Expenditures to HB1	
SGF	\$ 72,759,152	\$ 75,082,234	\$ 92,514,631	\$ 17,432,397	23.2%	\$ 19,755,479	27.2%
IAT	154,381	845,100	857,600	12,500	1.5%	703,219	455.5%
FSGR	33,282,937	37,532,306	37,091,484	(440,822)	(1.2%)	3,808,547	11.4%
Stat Ded	56,241	113,078	113,078	0	0.0%	56,837	101.1%
Federal	0	0	457,489	457,489	0.0%	457,489	0.0%
Total	\$ 106,252,711	\$ 113,572,718	\$ 131,034,282	\$ 17,461,564	15.4%	\$ 24,781,571	23.3%

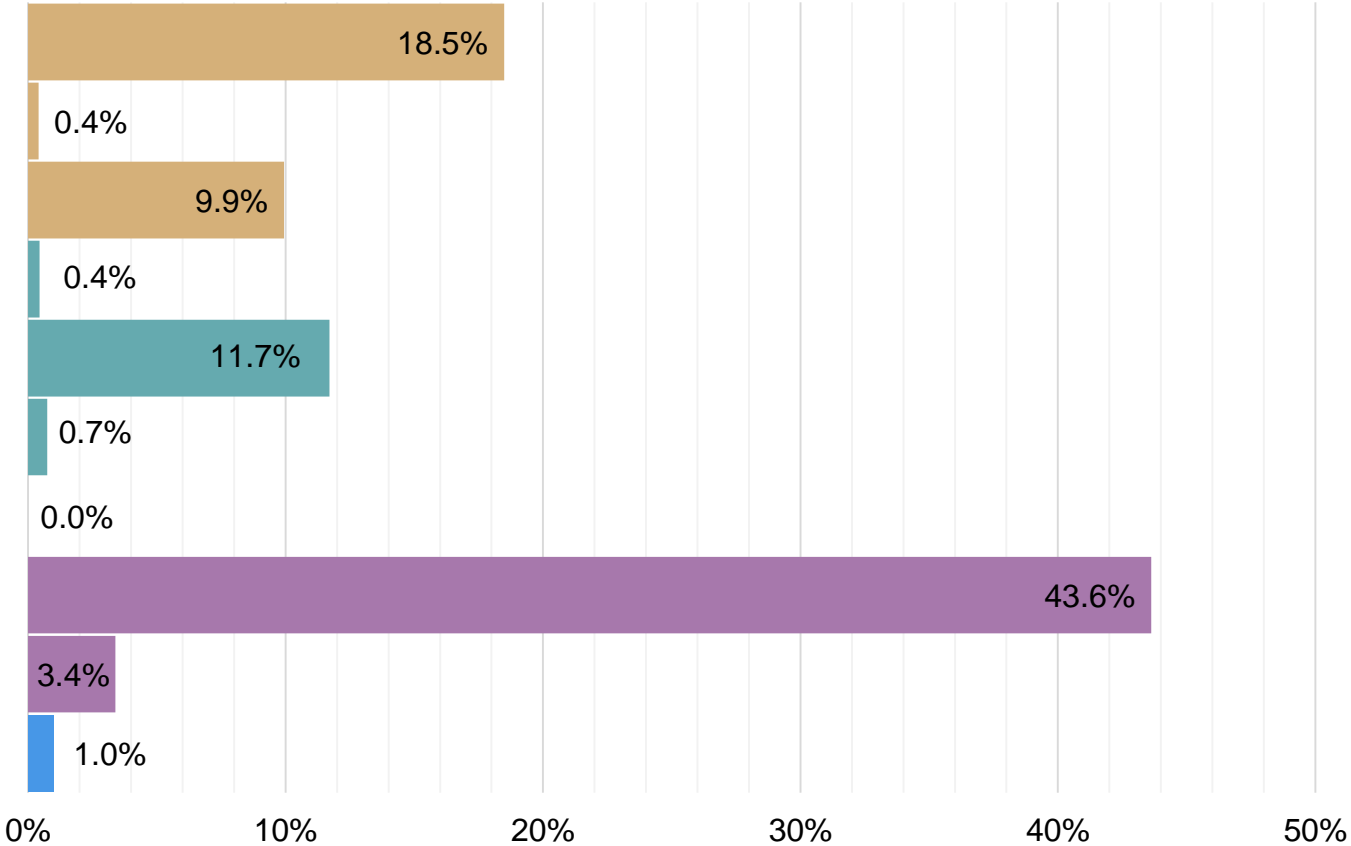
Significant funding changes compared to the FY 25 Existing Operating Budget

State General Fund	Fees & Self-generated	Federal Funds
<p>\$17.4 M net increase due to items such as:</p> <ul style="list-style-type: none"> \$17.1 M increase for new statewide closed party primary in FY 26 in accordance with Act 1 of the 2024 First Extraordinary Session and Act 640 of 2024 R.L.S. (\$3.1 M) decrease to remove funding carried into FY 25 no longer needed for FY 26 \$1.5 M increase to align projected election expenses with need for FY 26 	<p>(\$440,822) net decrease due to items such as:</p> <ul style="list-style-type: none"> (\$1.9 M) decrease to remove funding carried into FY 25 no longer needed for FY 26 \$422,000 increase to cover expenses in the Administrative Program 	<p>\$457,489 increase due to:</p> <p>The receipt of the Electronic Absentee System for Elections (EASE) grant from the Department of Defense's Federal Absentee Program</p>

FY 26 EXPENDITURE RECOMMENDATION

Total Budget = \$131,034,282

Expenditure Category		
Salaries	\$	24,223,954
Other Compensation		525,694
Related Benefits		13,027,512
Travel		580,841
Operating Services		15,345,661
Supplies		979,521
Professional Services		0
Other Charges		57,157,315
Interagency Transfers		4,437,284
Acquisitions/Repairs		14,756,500
Total	\$	131,034,282



OTHER CHARGES / INTERAGENCY TRANSFERS

Other Charges

Amount	Description
\$ 31,746,112	Election expenses:Admin and field operations, voting machines, poll commissioners, ballot printing,etc
18,360,688	Registrar of Voters (salaries and related benefits)
3,000,000	GeauxBiz one stop portal
917,000	IT ongoing costs for elections and commercial support
900,000	Commercial Online Registration Application filings
700,000	Digital repository
500,000	Central electronic repository
400,000	Additional IT services costs for workload increases to comply with federal requirements
234,188	Commercial miscellaneous operating expenses
166,249	Microfilming Contracts
113,078	LA State Exhibit Museum
\$57,037,315	Total Other Charges

Interagency Transfers

Amount	Description
\$ 1,371,043	State Printing and Postage Fees
1,264,088	Office of Risk Management
996,125	Office of Technology Services-Telecommunications
417,619	Office of Technology Services
180,789	Civil Service Fees
48,949	State Treasurer fees
43,891	Legislative Auditor fees
37,292	Uniform Payroll System fees
37,015	Office of State Procurement (OSP)
36,423	Old Governor's Mansion Expenses
4,000	Louisiana Property Assistance Agency
\$ 4,437,234	Total Interagency Transfers

EXPENDITURE COMPARISON

Expenditure Category	FY 24 Actual Expenditures	FY 25 Existing Operating Budget 12/1/24	FY 26 HB1 Budget	Change Existing Operating Budget to HB1		Change Actual Expenditures to HB1	
Salaries	\$ 21,051,706	\$ 23,653,052	\$ 24,223,954	\$ 570,902	2.4%	\$ 3,172,248	15.1%
Other Compensation	626,921	525,694	525,694	0	0.0%	(101,227)	(16.1%)
Related Benefits	13,225,618	13,288,410	13,027,512	(260,898)	(2.0%)	(198,106)	(1.5%)
Travel	213,804	323,241	580,841	257,600	79.7%	367,037	171.7%
Operating Services	12,720,488	15,525,833	15,345,661	(180,172)	(1.2%)	2,625,173	20.6%
Supplies	719,582	1,029,736	979,521	(50,215)	(4.9%)	259,939	36.1%
Professional Services	0	0	0	0	0.0%	0	0.0%
Other Charges	53,041,327	53,506,232	57,157,315	3,651,083	6.8%	4,115,988	7.8%
Interagency Transfers	3,642,730	3,879,133	4,437,284	558,151	14.4%	794,554	21.8%
Acquisitions/Repairs	1,010,536	1,841,387	14,756,500	12,915,113	701.4%	13,745,964	1,360.3%
Total	\$ 106,252,712	\$ 113,572,718	\$ 131,034,282	\$ 17,461,564	15.4%	\$ 24,781,570	23.3%

SIGNIFICANT EXPENDITURE CHANGES

Compared to the FY 25 Existing Operating Budget

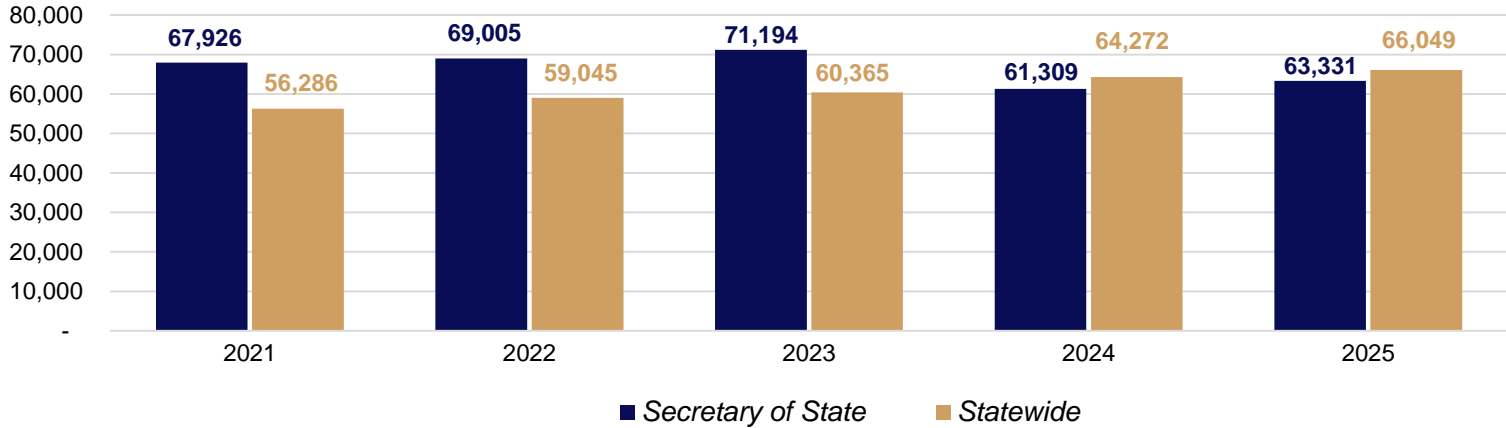
Personnel Services	Other Charges	Acquisitions/Repairs
<p>\$310,004 increase due to items such as:</p> <ul style="list-style-type: none">• \$570,902 increase to align salaries to projected FY 26 levels and to factor in projected savings from vacant positions in FY 26• (\$260,898) decrease needed to cover the base need for related benefits, retirement contribution, rate changes, and group insurance rate changes for active and retired employees	<p>\$4.2 M increase due to:</p> <ul style="list-style-type: none">• \$1.5 M increase to align projected election expenses with anticipated need• \$400,000 for additional IT service costs associated workload increases. Additional services will be needed to comply with revised Title II of the Americans with Disabilities Act	<p>\$12.9 M net increase in acquisitions/repairs include:</p> <ul style="list-style-type: none">• \$12.8 M for electronic poll (E-Poll) books for all parish precincts statewide• \$829,000 for restorations, repairs, and renovations at the Louisiana State Exhibit Museum (LSEM), Mansfield Female College Museum, Old State Capitol, and the Old Governor's Mansion• \$532,500 for the replacement of approximately 306 computers and other equipment• \$500,000 for upgrades to a commercial generator for preservation of dioramas and exhibits requiring climate control at LSEM• \$75,000 for conference tables, chairs, desks, filing cabinets, and cubicles for the Division of Elections Integrity and Division of Elections Operations• \$60,000 to replace aging furniture in elections warehouse

PERSONNEL INFORMATION

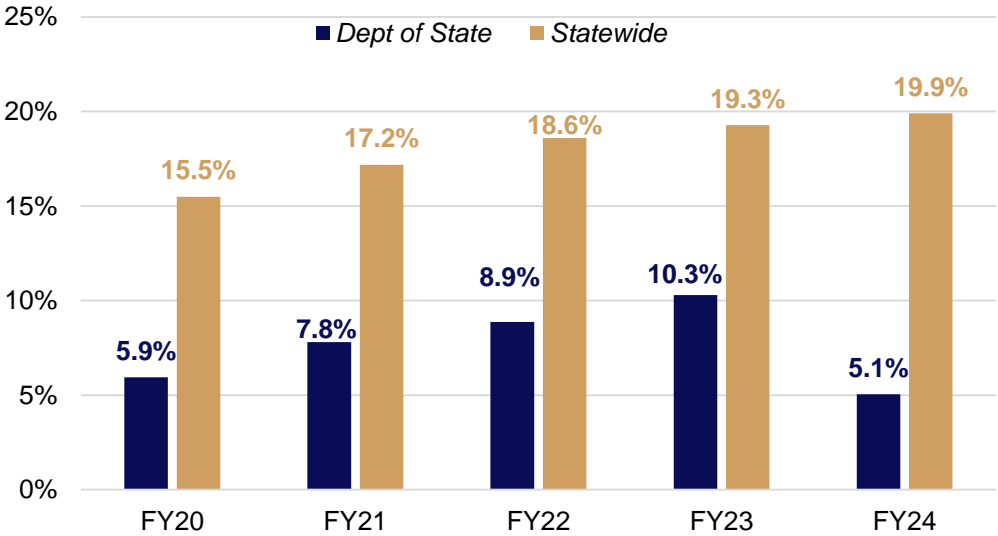
FY 2026 Recommended Positions

366	Total Authorized T.O. Positions (346 Classified, 20 Unclassified)
0	Authorized Other Charges Positions
0	Non-T.O. FTE Positions
15	Vacant Positions (December 30, 2024)

Historical Average Salary



Turnover History



Top Positions Vacated FY 2024

Position	Number of Employees	Separations	Turnover Rate
Administrative Coordinator II	13	3	23.1%
Commercial Specialist C	24	2	8.3%
Election Tech Manager	14	2	14.3%
Public Information Officer III	2	1	50%

Source: Department of Civil Service

DEPARTMENT CONTACTS



Nancy Landry
Secretary of State
Nancy.landry@sos.la.gov



Catherine Newsome
First Assistant Secretary of State
Catherine.newsome@sos.la.gov



Shanda Jones
Undersecretary / Chief of Staff
Shanda.jones@sos.la.gov

General Department Information



DEPARTMENT OVERVIEW

Administrative / Elections

Administrative Program

Executive Services

- Leadership and management function, includes the Secretary of State, executive staff, public information, and publication staff

Primary Support Services

- Provides support to the department, including accounting, purchasing, and human resources

Legal Support Services

- Legal division reviews and approves all ballot provisions, home rule charter propositions, recall elections, and constitutional amendments, drafts and reviews contracts
- Commission division authenticates signatures on certificates, provides advice, and interpretation of multiple statutes

IT Support Services

- Assists with planning and implementing the information technology hardware and software that the department uses

Election Program

Administrative Services

- Responsible for processing and qualifying candidates for state offices and preparing ballots for elections
- Directs, assists, and prescribes rules and regulations that are applied by each registrar of voter in the state
- Encourages qualified Louisiana citizens to register to vote by providing educational programs for school-aged children and adults
- Investigates reports of voter fraud

Registrar of Voters

- Responsible for the payment of the state's share of salaries of the Registrar of Voters and their employees, as well as the prorated portion of the annual canvass costs
- The Registrar of Voters is also responsible for registering voters in the state, as well as updating registration data

Election Support Services

- Responsible for the day-to-day maintenance and repair of the voting machines, including election day emergency repair

DEPARTMENT OVERVIEW

Commercial / Archives and Records

Commercial Program

Administrative Services

- Provides services for business licensing, as well as collects fees and tracks annual reporting for businesses operating in Louisiana
- Serves as the processing agent for the state on foreign filings and corporate filings
- Responsible for the Uniform Commercial Code (UCC) notification system

geauxBiz

- The geauxBiz software and database package is where business can register with the required departments, including the Secretary of State, Louisiana Workforce Commission, and the Department of Revenue
- Prepares a customized business license checklist tailored to any specific business license need

Notary Services

- Maintains a database on the notaries public registered in the state
- Processes applications for the state notary exam

Archives and Records

Administrative Services

- Identifies, collects, preserves, maintains, and makes available the records and artifacts of Louisiana's history at the Louisiana State Archives Building
- Over 2.2 million genealogical records are available online

Record Services

- Provides the services, information, and facilities necessary to promote and support the state's governmental records
- Provides storage for business records and for state agencies

DEPARTMENT OVERVIEW

Museum and Other Operations

- Responsible for presenting exhibits, education, and other programs to the public that emphasize the political, social, and economic influences, personalities, institutions, and events that are part of Louisiana's history and culture
- Acquires, refurbishes, and preserves artifacts and other historical relics



Delta Music Museum

Eddie G. Robinson Museum

Germantown Colony Museum

LA State Cotton Museum

LA State Exhibit Museum

LA State Oil & Gas Museum

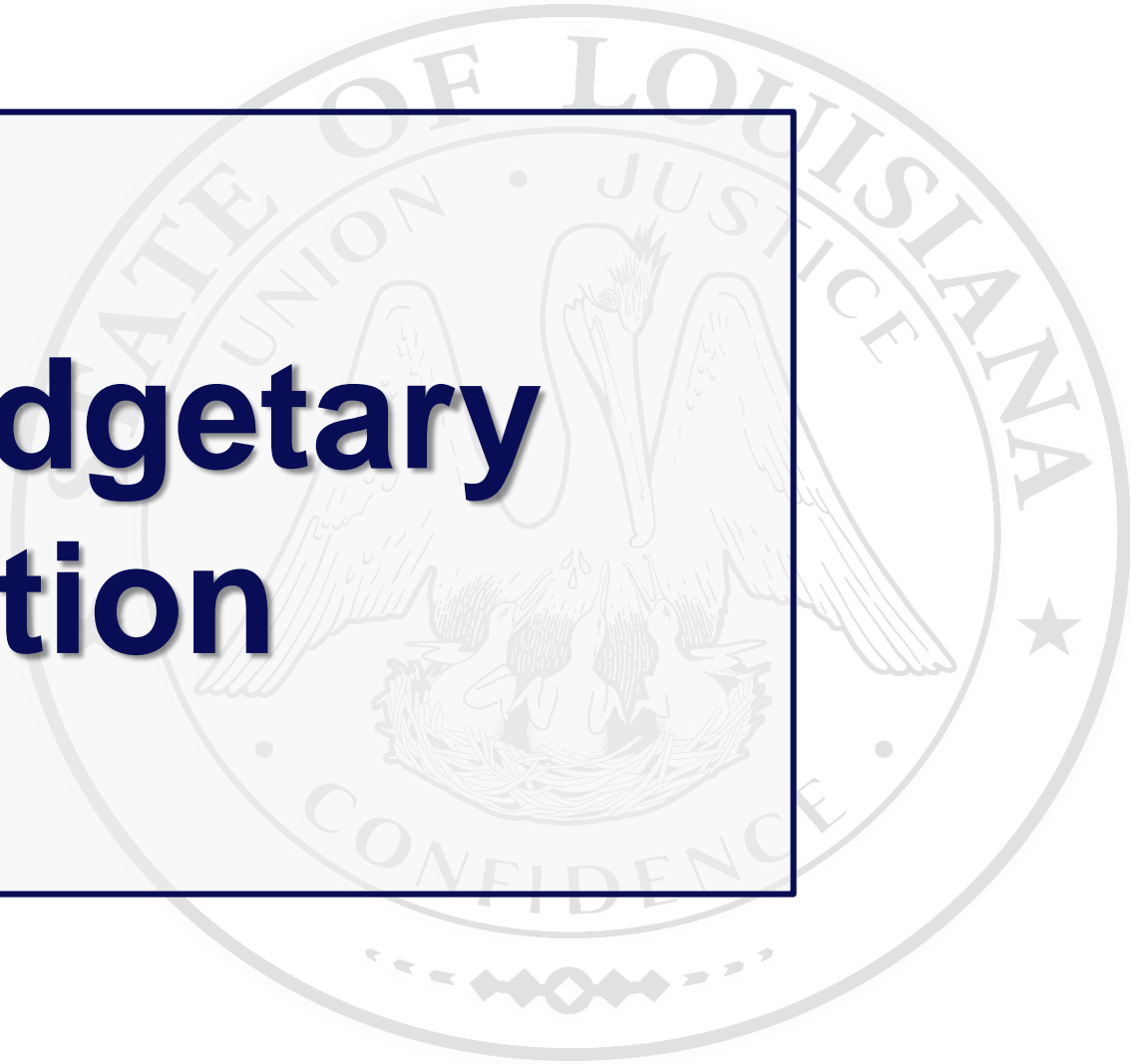
Mansfield Female College Museum

Old State Capitol

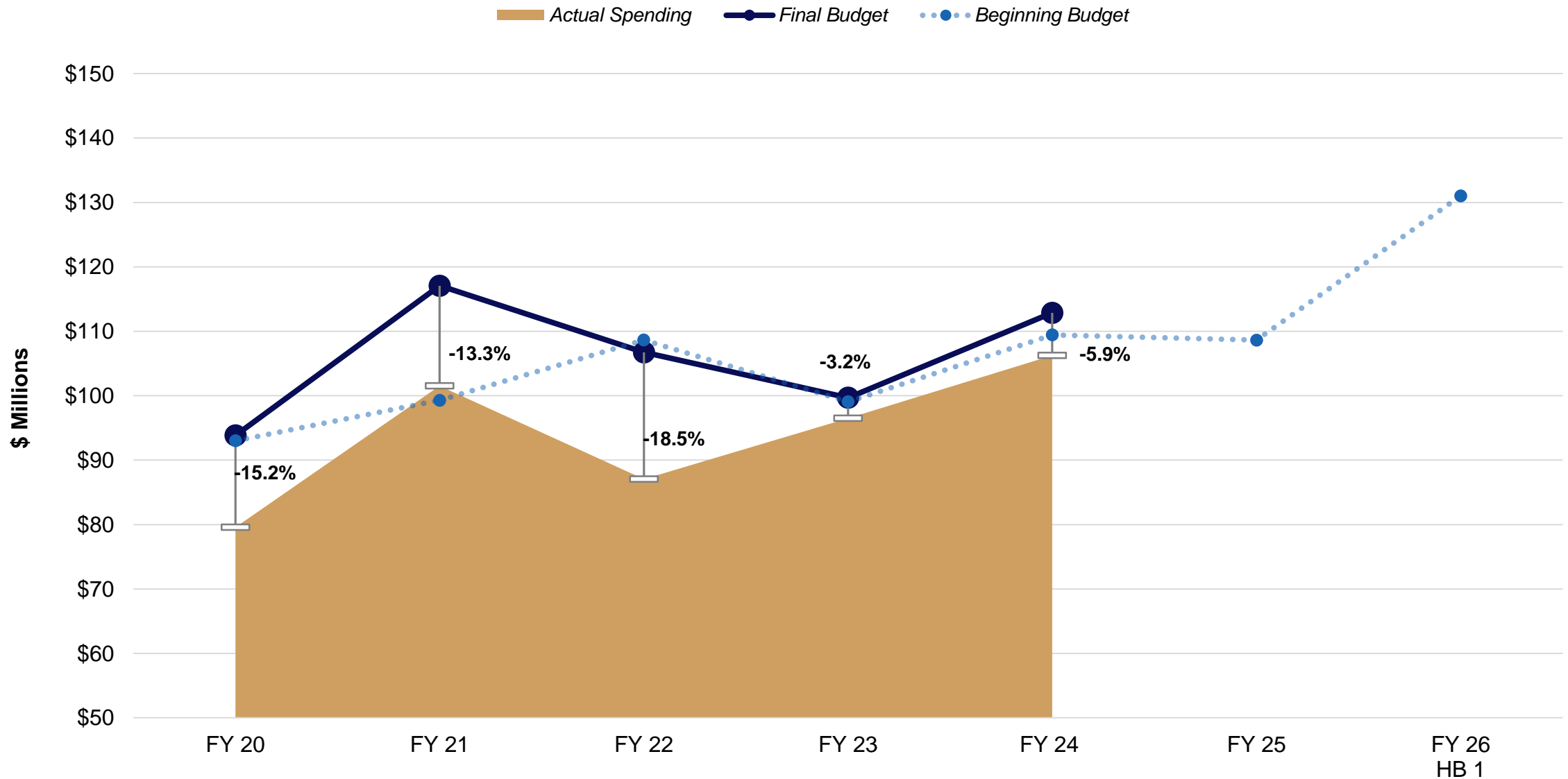
Old Governor's Mansion



General Budgetary Information



HISTORICAL BUDGET



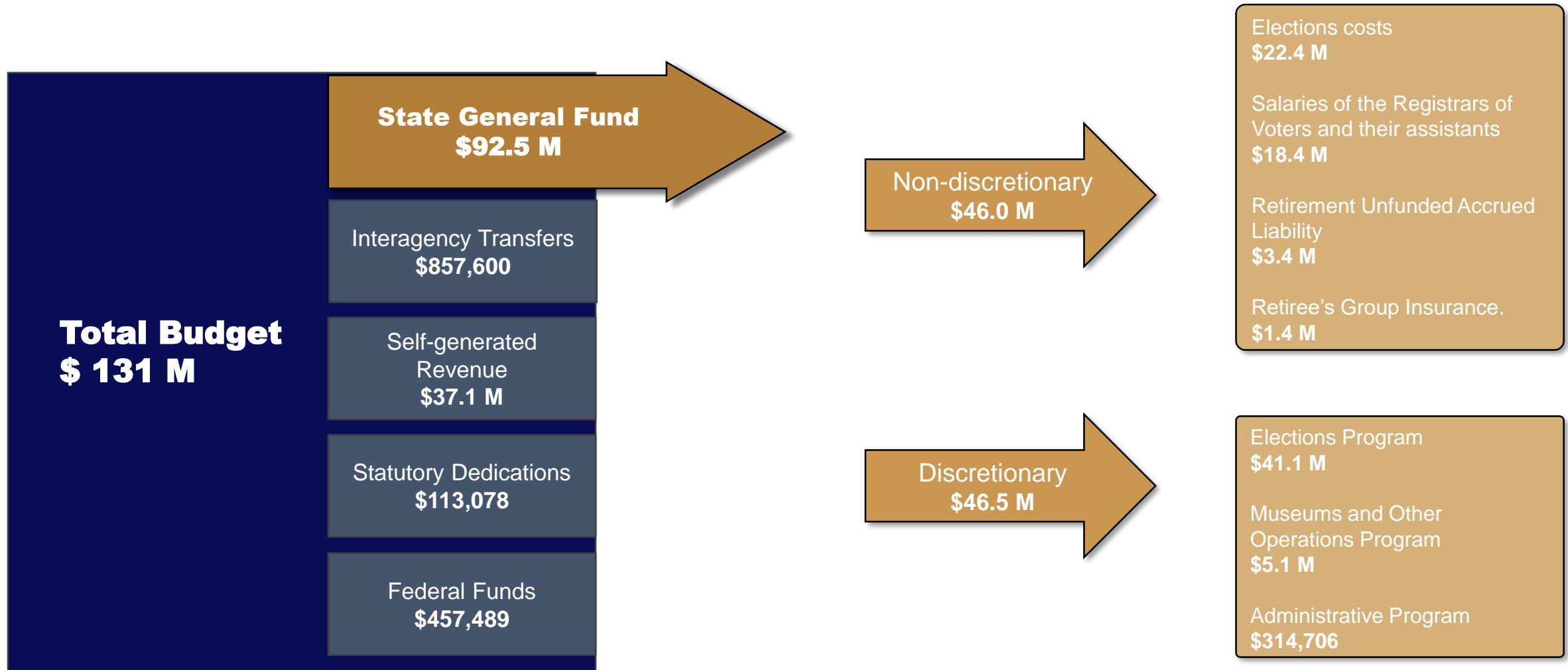
FY 25 EXISTING OPERATING BUDGET

The FY 2024-25 Existing Operating Budget (EOB) was frozen on December 1, 2024. This point-in-time reference is used in both the Executive Budget and the General Appropriations Bill.

Means of Finance	Appropriation	Mid-Year Adjustments	Existing Operating Budget
General Fund	\$ 71,976,245	\$ 3,105,989	\$ 75,082,234
Interagency Transfers	700,100	145,000	845,100
Self-generated Revenue	36,610,163	922,143	37,532,306
Statutory Dedications	113,078	0	113,078
Federal	0	0	0
Total	\$ 109,399,586	\$ 4,173,132	\$ 113,572,718

Mid-year Adjustments Summary				
August	September	October	November	December
\$4.2 M Various means of finance carried into FY 25 from the prior fiscal year for repairs, vehicles and contract services	No change	No change	No change	No change

DISCRETIONARY EXPENSES



* Figures may not add precisely due to rounding *

MUSEUMS

Museum	FY 22 Cost Per Visitor	FY 22 Visitation	FY 22 Total Cost	FY 23 Cost Per Visitor	FY 23 Visitation	FY 23 Total Cost	FY 24 Cost Per Visitor	FY 24 Visitation	FY 24 Total Cost
LA State Exhibit Museum	\$25.69	50,668	\$1,301,623	\$27.43	47,096	\$1,291,843	\$41.77	28,310	\$1,182,509
Old State Capitol	\$71.99	41,688	\$3,001,100	\$45.52	42,926	\$1,953,992	\$55.72	36,342	\$2,024,976
Cotton Museum	0	1,598	0	\$0.00	0	0	\$42.27	1,129	\$47,723
Eddie G. Robinson Museum	\$10.29	3,955	\$40,698	\$7.97	5,263	\$41,946	\$11.78	4,227	\$49,794
Delta Music Museum	\$31.67	4,562	\$144,500	\$26.01	3,361	\$87,420	\$25.38	3,531	\$89,617
Mansfield Female College	\$4.31	9,087	\$39,171	\$8.30	6,299	\$52,282	\$11.86	4,315	\$51,176
LA State Oil and Gas Museum	\$588.73	169	\$99,495	\$68.70	1,696	\$116,515	\$59.16	1,590	\$94,064
Germantown Colony Museum	\$62.18	1,010	\$62,801	\$29.30	3,005	\$88,047	\$33.93	1,954	\$66,299
Old Governor's Mansion	\$103.57	2,738	\$283,577	\$61.98	8,997	\$557,634	\$33.82	8,984	\$303,839

Source: Louisiana Secretary of State and LAPAS

STATEWIDE ELECTION COSTS

Fiscal Year	Election Date	Election Type	Cost	Number of Voters	Percent Voted	Cost/Vote
FY 19	11/6/2018 12/8/2018	Open Primary/Congressional Open General/Congressional	\$5,742,532	1,519,405	50.8%	\$3.78
			\$5,050,895	530,463	17.7%	\$9.52
FY 20	10/12/2019 11/16/2019	Gubernatorial Primary Gubernatorial General	\$6,126,549	1,359,967	45.9%	\$4.50
			\$5,461,348	1,518,718	51.1%	\$3.60
FY 21	7/11/2020 11/3/2020 12/5/2020	Presidential Preference Open Primary/Presidential/Congressional Open General/Congressional	\$5,158,127	523,416	21.05%	\$9.85
			\$8,225,006	2,169,401	70.14%	\$3.79
			\$6,401,691	527,821	16.99%	\$12.18
FY 22	11/13/2021	Statewide Amendments/Open Primary/Orleans Municipal Primary	\$4,670,544	425,798	14.06%	\$10.97
FY 23	11/8/2022 12/10/2022 3/25/2023 4/29/2023	Open Primary Congressional Open General Congressional Municipal Primary Municipal General	\$6,569,673	1,410,475	46.72%	\$4.66
			\$5,370,898	438,578	14.49%	\$12.25
			\$1,993,510	129,564	11.77%	\$15.39
			\$2,181,642	135,664	11.26%	\$16.08
FY 24	10/14/2023 11/18/2023 3/23/2024 4/27/2024	Gubernatorial Primary Gubernatorial General/Presidential Preference Primary/Municipal Primary Municipal General	\$6,899,107	1,078,689	36.30%	\$6.40
			\$6,079,007	684,213	23.00%	\$8.88
			\$6,884,510	409,005	17.20%	\$16.83
			\$3,235,062	153,788	9.60%	\$21.04

* Percentage of registered voters that voted on election day, absentee or early voted